

WALL-MOUNTED FUSE CABINETS

15kV • 25kV



Indoor/Outdoor

Federal Pacific Metal-Enclosed Wall-Mounted Fuse Cabinets provide a safe, convenient method of fusing loads where switching is not required or is done elsewhere. These space-efficient cabinets may be wall or floor mounted and may be located in dry indoor vaults or outdoors. Typical applications include protection of:

- A transformer in an industrial or commercial building.
- A high-density load in a commercial building.
- A feeder circuit fed by a selector switch, manual or automatic.

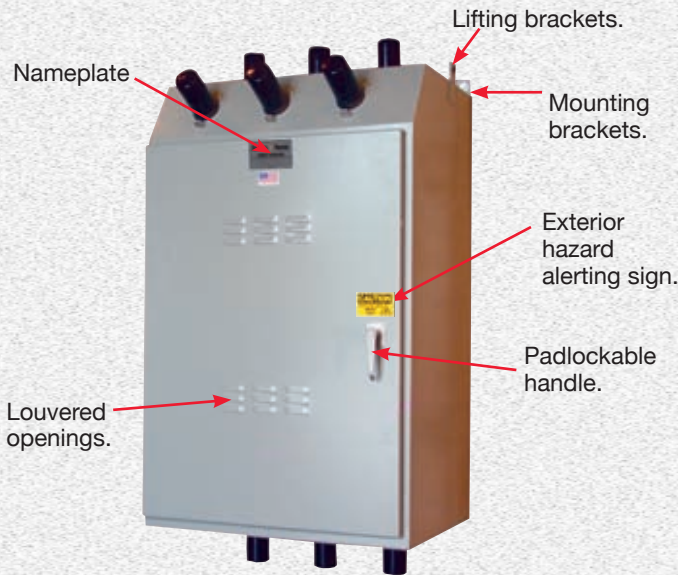
Wall mounted fuse cabinets are available for three-phase applications on 15 kV and 25 kV systems.

Indoor/outdoor design: All welded, 11-gauge steel with gasketed doors (on outdoor units), three-point door latches, screened rainproof louvers and padlockable handle. The anti-corrosion finish

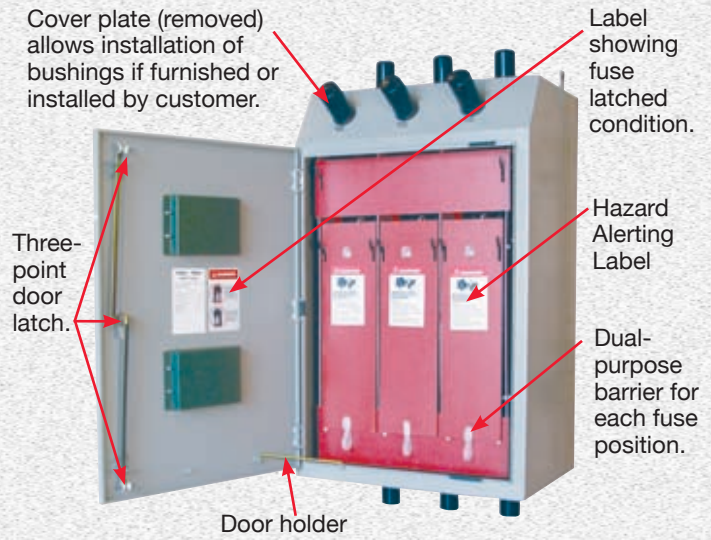
system includes chemical cleaning, phosphatizing and sealing followed by an electrostatically deposited powder epoxy primer. The finish coat is an electrostatically deposited polyurethane topcoat. The finish system meets the requirements of ANSI C57.12.28 and the standard color is ANSI 61 light gray.

Cable Termination Options:

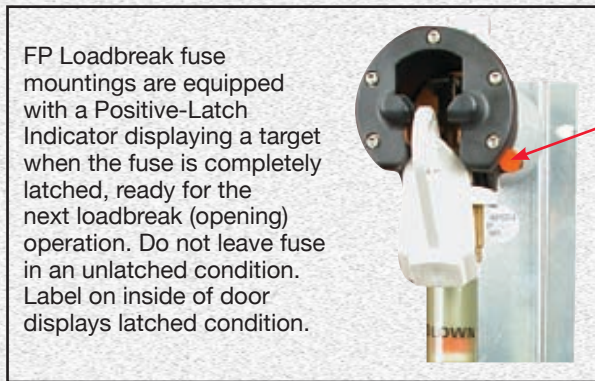
- Knockouts for conduit.
- Porcelain flange mounted potheads.
- 200 ampere bushing wells for loadbreak inserts and elbows, 15kV, 95kV BIL and 25kV, 125kV BIL.
- 600 ampere bushings for non-loadbreak type separable connectors 15kV and 25kV, 125kV BIL.



Exterior of Wall-Mounted Fuse Cabinet.

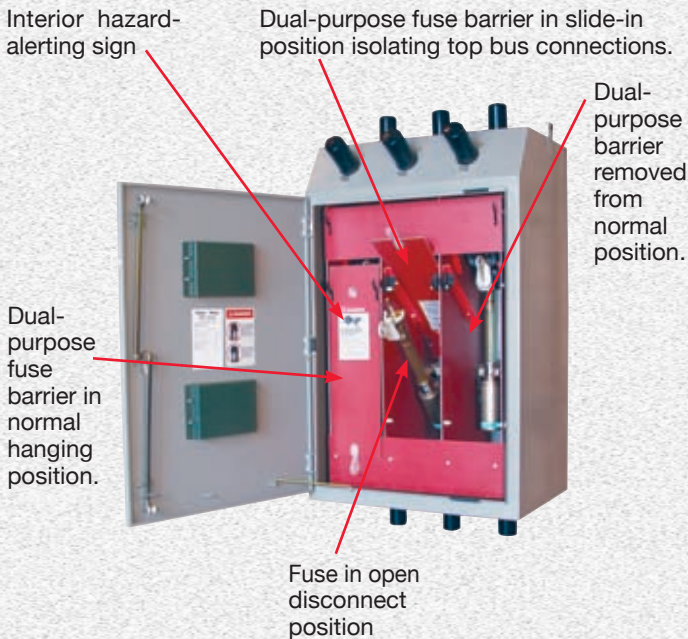


Wall-Mounted Fuse with door open to show optional internal dual-purpose barrier system.



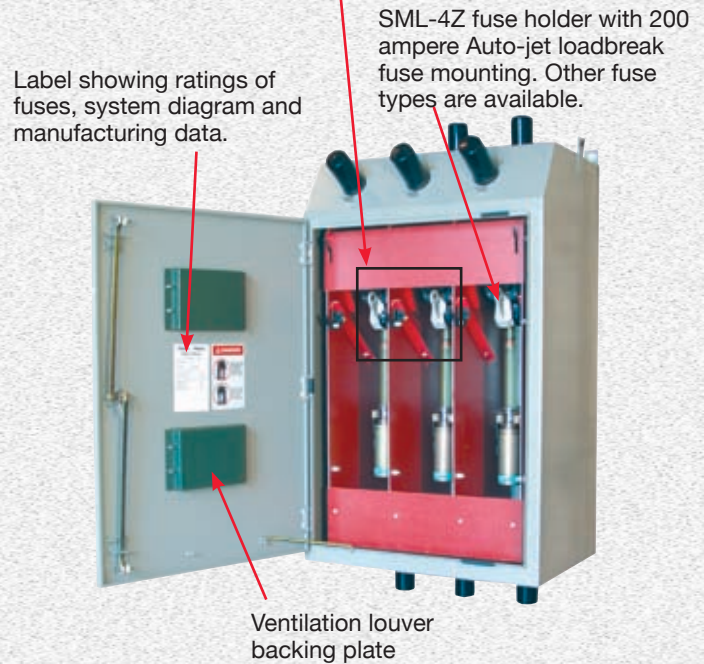
FP Loadbreak fuse mountings are equipped with a Positive-Latch Indicator displaying a target when the fuse is completely latched, ready for the next loadbreak (opening) operation. Do not leave fuse in an unlatched condition. Label on inside of door displays latched condition.

Positive Latch Indicator



Interior hazard alerting sign
 Dual-purpose fuse barrier in slide-in position isolating top bus connections.
 Dual-purpose barrier removed from normal position.
 Dual-purpose fuse barrier in normal hanging position.
 Fuse in open disconnect position

*View Showing Various Positions for Optional Dual-Purpose Fuse Barriers.
 (Shown with SML-4Z fuseholders)*

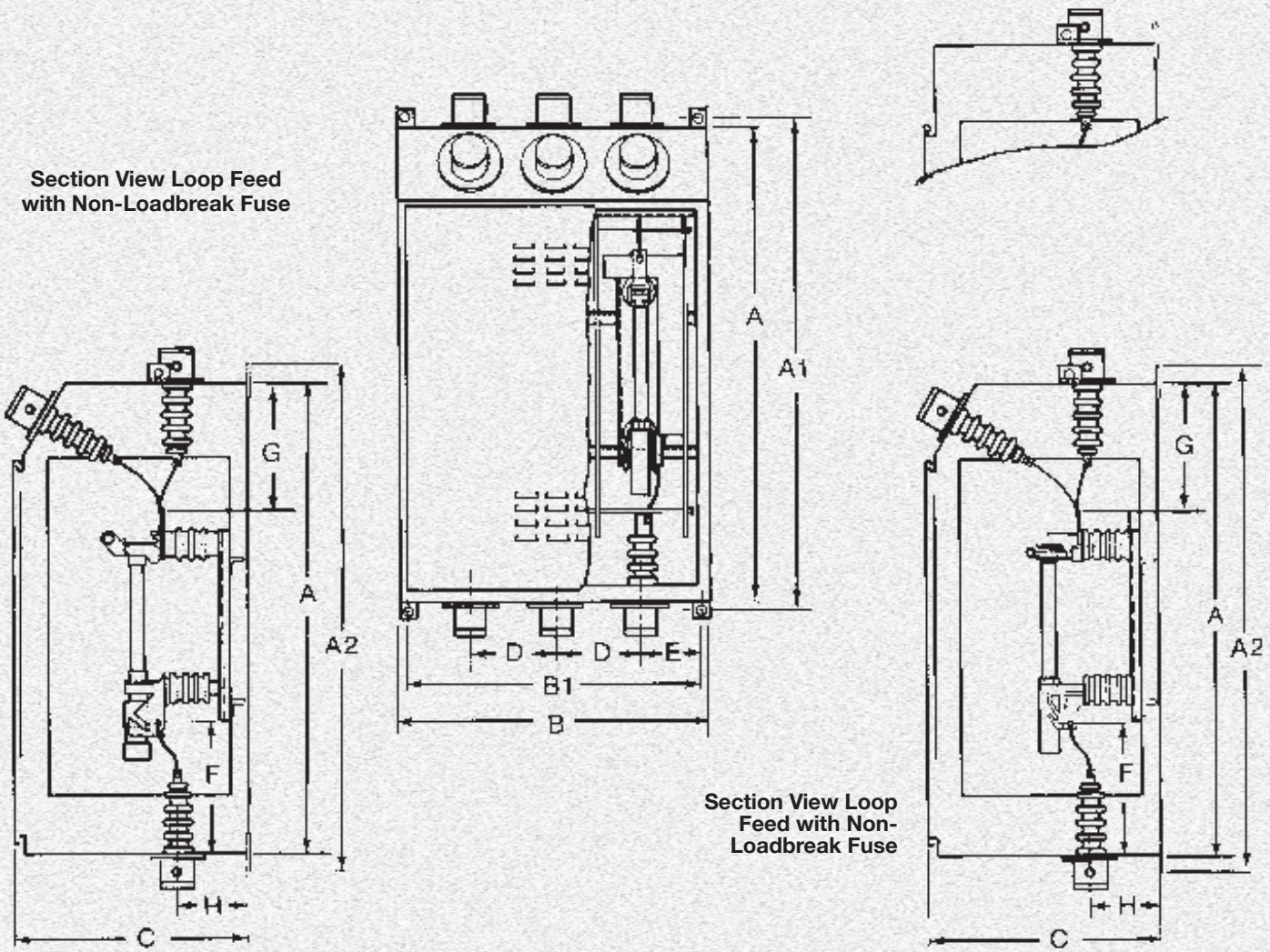


SML-4Z fuse holder with 200 ampere Auto-jet loadbreak fuse mounting. Other fuse types are available.
 Label showing ratings of fuses, system diagram and manufacturing data.
 Ventilation louver backing plate

*View With Door Open and Barriers Removed.
 (Shown with SML-4Z fuseholders)*

INDOOR/OUTDOOR SPECIFICATIONS

(Illustrated with optional porcelain terminators)



Wall-Mounted Cabinets

Catalog Number	Ratings				Fuse Unit or Refill Type	Dimensions - Inches										
	Nom.	Max. Des.	BIL	Amps		A	A1	A2	B	B1	C	D	E	F	G	
*WMF-315-63	13.8	17.0	95	200E	SM-4	48	51	53	35	32-1/2	26	9-3/4	8-1/2	12-5/16	9-9/16	
*WMF-315-93	13.8	17.0	95	200E	SM-4	56-1/2	59-1/2	61-1/2	35	32-1/2	26	9-3/4	8-1/2	15-9/16	8	
*WMF-325-63	25	27	125	200E	SM-4	60	63	65	44	41-1/2	33	12	10	16-1/4	10	
*WMF-325-94	25	27	125	200E	SM-4	66	60	71	44	41-1/2	33	12	10	19-1/4	10	
**WMF-315-63-L4Z	13.8	17.0	95	200E	SM-4	48	51	53	35	32-1/2	26	9-3/4	48-1/2	12-5/16	9-9/16	
**WMF-315-93-L4Z	13.8	17.0	95	200E	SM-4	56-1/2	9-1/2	61-1/2	35	32-1/2	26	9-3/4	8-1/2	15-9/16	8	
**WMF-325-63-L4Z	25	27	125	200E	SM-4	60	63	65	44	41-1/2	33	12	10	16-1/4	10	
**WMF-325-93-L4Z	25	27	125	200E	SM-4	66	69	71	44	41-1/2	33	12	10	19-1/4	10	
**WMF-315-63-U20	13.8	17.0	95	200E	SM-4	48	51	53	35	32-1/2	26	9-3/4	8-1/2	12-5/16	9-9/16	
**WMF-315-93-U20	13.8	17.0	95	200E	SM-4	56-1/2	59-1/2	61-1/2	35	32-1/2	26	9-3/4	8-1/2	15-9/16	8	
**WMF-325-63-U20	25	27	125	200E	SMU-20	60	63	65	44	41-1/2	33	12	10	16-1/4	10	
**WMF325-93-U20	25	27	125	200E	SMU-20	60	69	71	44	41-1/2	33	12	10	16-1/4	10	

*These are non-loadbreak units designed to accept the type SM-4 fuseholder.

**The Auto-jet loadbreak integral interrupter is included in these units, accepting either the SML-4Z fuseholder, the SMU-20 fuse with SML-20 end fittings, or DBU fuses and end fittings. The Auto-jet device permits live switching up to 200 amperes with an ordinary hotstick.

WALL-MOUNTED SWITCH CABINETS

15kV • 25kV



The Federal Pacific Wall-Mounted Switch Cabinets include the FP Auto-Jet® Load-Interrupter Switch in a space efficient, all-welded, Indoor/Outdoor 11-gauge steel enclosure designed for wall or floor mounting. Mounting tabs are included on the back at the top and bottom. Lifting eyes are provided on the sides at the top. Holes with removable plates are provided in the top and bottom for conduit entrance.

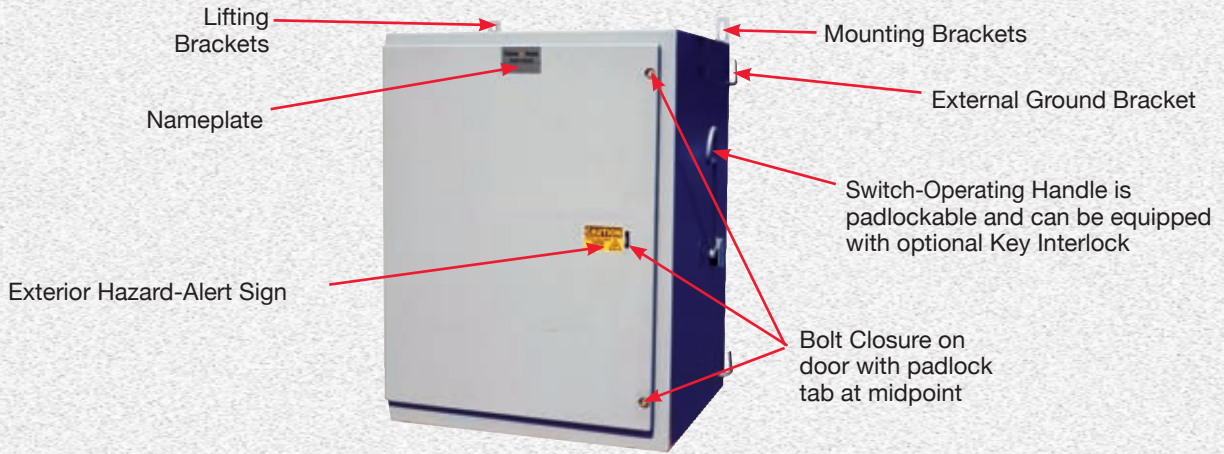
The enclosure door is secured at three points - two pentahead bolts and a padlockable tab - and has stainless-steel hinges and pins. A window is provided in the interior for viewing the position of the switch blades when optional dual-purpose barriers are in the normal hanging position. Louvers are installed in the door to ensure proper ventilation. The door opening is gasketed at top and on both sides for outdoor applications.

The anti-corrosion finish system includes chemical cleaning, phosphatizing, followed by a powder epoxy primer. The finish coat is an oven-baked, powder polyurethane finish. Standard color is ASA 61, light gray.

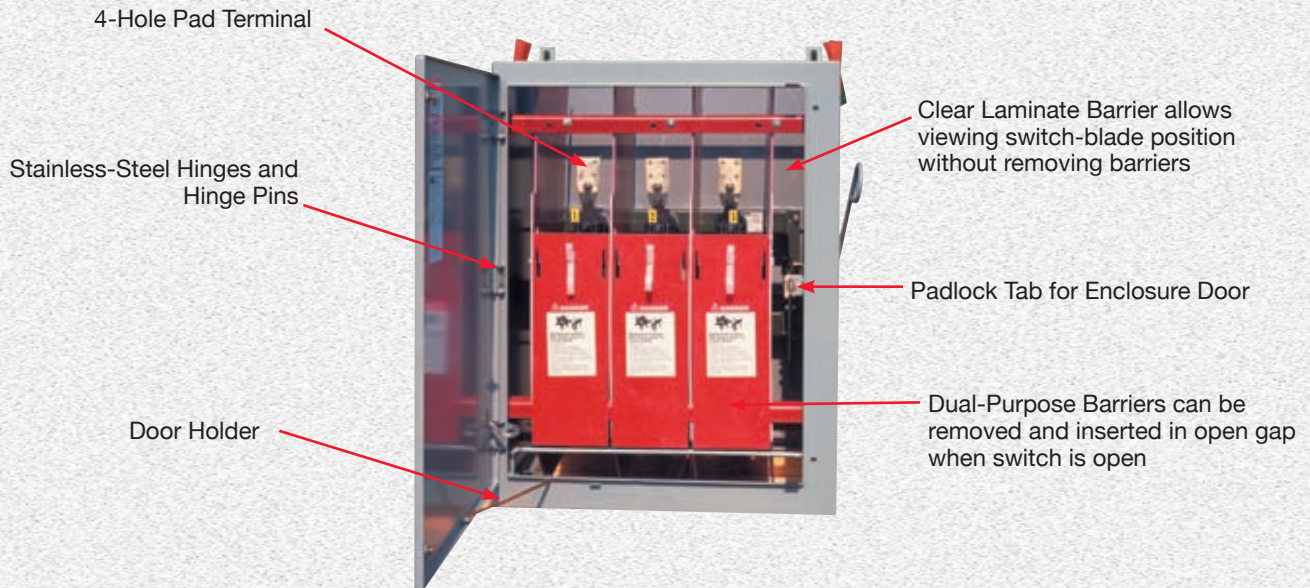
The Auto-Jet® Load-Interrupter Switch, rated 600 amperes, 15 kV, is UL® Recognized and features an industry-leading, 3-time duty-cycle fault-closing rating of 40,000 amperes asymmetrical.

Typical applications include:

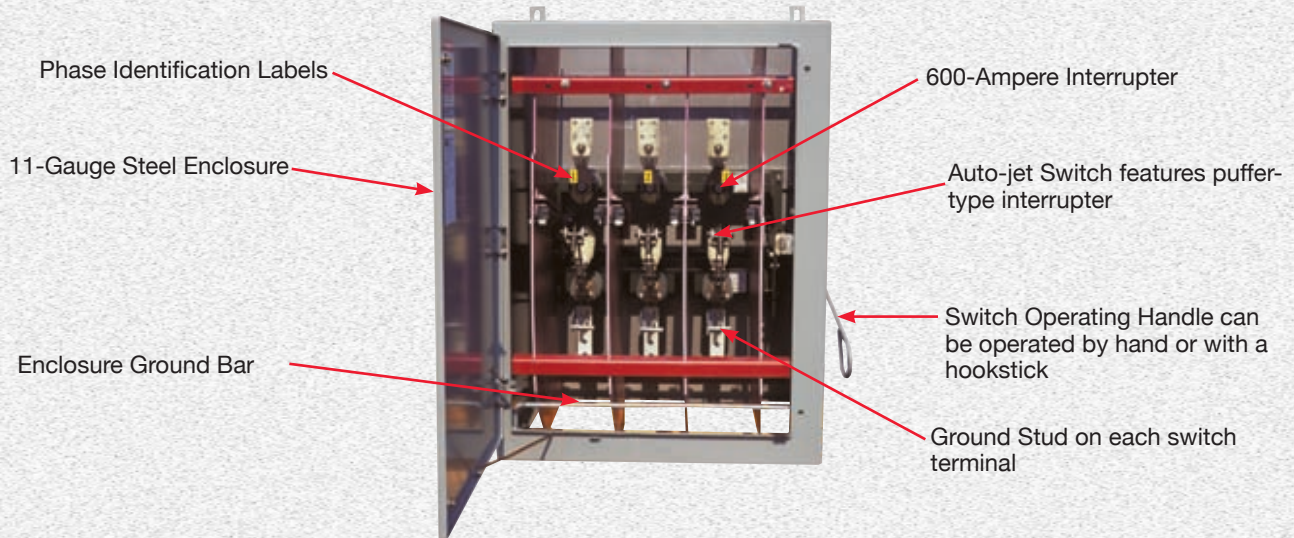
- Service Entrance Switching
- Transformer Primary and Secondary Switching
- Line Switching



Exterior view of rugged FP Wall-Mounted Switch Enclosure.



Interior view of wall-mounted switch to show barrier arrangement.



Interior view of wall-mounted switch to show Auto-jet[®] switch.